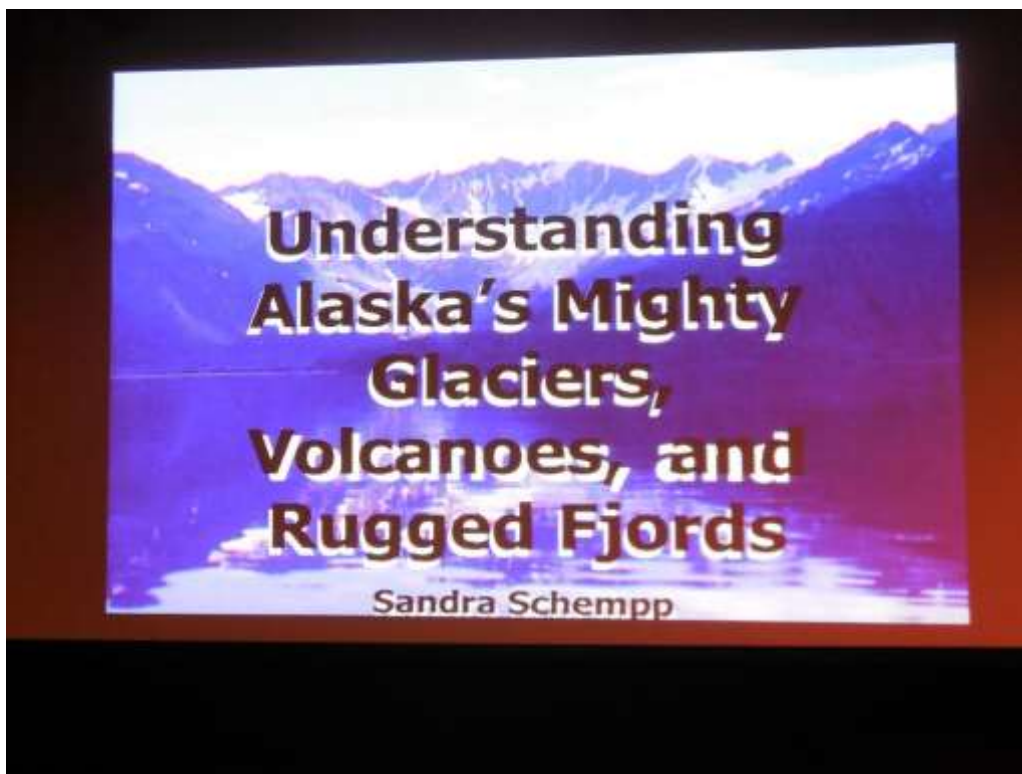


Alaska Day 7 - College Fjord



Naturalist Sandra Schempp talks about the whales we will see in College Fjord. Afterwards, we go to a lecture by Sandra Schempp: "Understanding Alaska's Mighty Glaciers, Volcanoes, and Rugged Fjords."





Entering College Fjord at 5:15pm. https://en.wikipedia.org/wiki/College_Fjord



A large valley glacier (also known as a hanging glacier). Most likely Amherst Glacier.



fjord. (fyôrd) A long, narrow, deep inlet from the sea between steep slopes of a mountainous coast. **Fjords** usually occur where ocean water flows into valleys formed near the coast by glaciers.





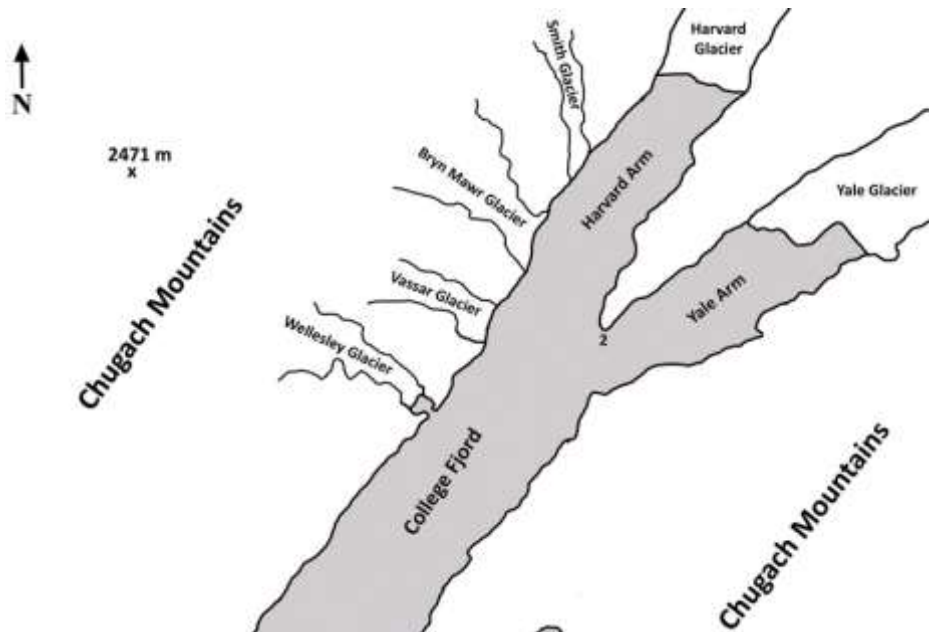
Valley glaciers (above) and tidewater glaciers (below).



Glaciers (L->R): Wellesley, Vassar, Bryn Mawr, Smith, Harvard



Wellesley glacier.





Wellesley Glacier.





A view of the numerous crevasses on Wellesley Glacier.



A view of Harvard Glacier in the distance (above) and close-up (below). The **Harvard Glacier** is a large tidewater glacier in the Alaska's Prince William Sound. The glacier has a 1.5-mile (2 km) wide face where it calves into the College Fjord. It is 300 ft thick and covers 120,000 acres of Chugach National Forest. The Harvard Glacier is the second largest glacier in the Prince William Sound, after the Columbia Glacier. It is a popular destination of cruise ships in the Prince William Sound. (Wikipedia)





Bryn Mawr Glacier, Smith Glacier, and Harvard Glacier (L > R).



Glaciers above Yale Glacier (left inlet).



Panoramic view of College Fjord (west, left > east, right)

College Fjord contains five tidewater glaciers (glaciers that terminate in water), five large valley glaciers, and dozens of smaller glaciers, most named after renowned East Coast colleges (women's colleges for the NW side, and men's colleges for the SE side). College Fjord was discovered in 1899 during the Harriman Expedition, at which time the glaciers were named. The expedition included a Harvard and an Amherst professor, and they named many of the glaciers after elite colleges. According to Bruce Molina, author of *Alaska's Glaciers*, "They took great delight in ignoring Princeton." (Wikipedia)



A Close-up of Bryn Mawr Glacier.

It was named for Bryn Mawr College in Bryn Mawr, Pennsylvania by members of the 1899 Harriman Alaska Expedition. (Wikipedia)



Another view of the famous Harvard Glacier.





Leaving College Fjord. College Fjord is two miles wide.



Icebergs floating on the water.



Vassar Glacier. Pieces of the glacier (i.e. icebergs) are floating on the water.





Leaving College Fjord.

